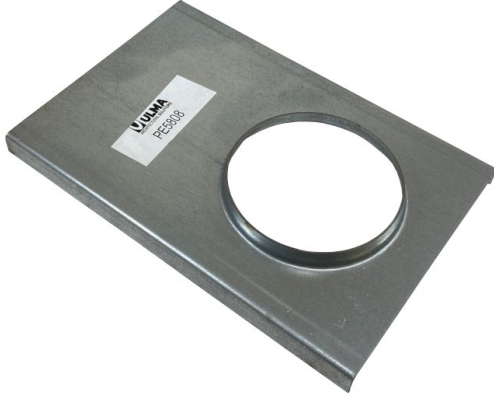


<b>Number</b> <b>D100 Accessories</b>	<b>Series</b> <b>D100</b> Galvanized Steel
------------------------------------------	--------------------------------------------------



End Outlet	Closed Encap	Min Height (in)	Max Height (in)
PE580x	T100DxxC	3.93	7.67




**CS100-T**

**CS100-H**

CS100 -H and CS100-T are locking devices to be used with the U100K and D100 series trench drain.

CS100-H is to be used with ductile iron or composite grates  
 CS100-T is to be used with galvanized and stainless steel grates

<b>Manufacturer</b>  	<b>Specification</b>  ULMA D100 Accessories SUPPLIED BY TRENCH DRAIN SUPPLY
----------------------------------------------------------------------------------------------------------------	--------------------------------------------------------------------------------------

DISCLAIMER - The customer and the customer's architects, engineers, consultants, and other professionals are completely responsible for the selection installation and maintenance of any product purchased from Trench Drain Supply and/or its manufacturers. TRENCH DRAIN SUPPLY MAKES NO WARRANTY, EXPRESS OR IMPLIED, AS TO THE SUITABILITY, DESIGN, MERCHANTABILITY, OR FITNESS OF THE PRODUCT FOR CUSTOMERS APPLICATION. The drawing and information provided remain the property and copyright of the manufacturer listed. The manufacturer reserves the right to modify specification without notice.